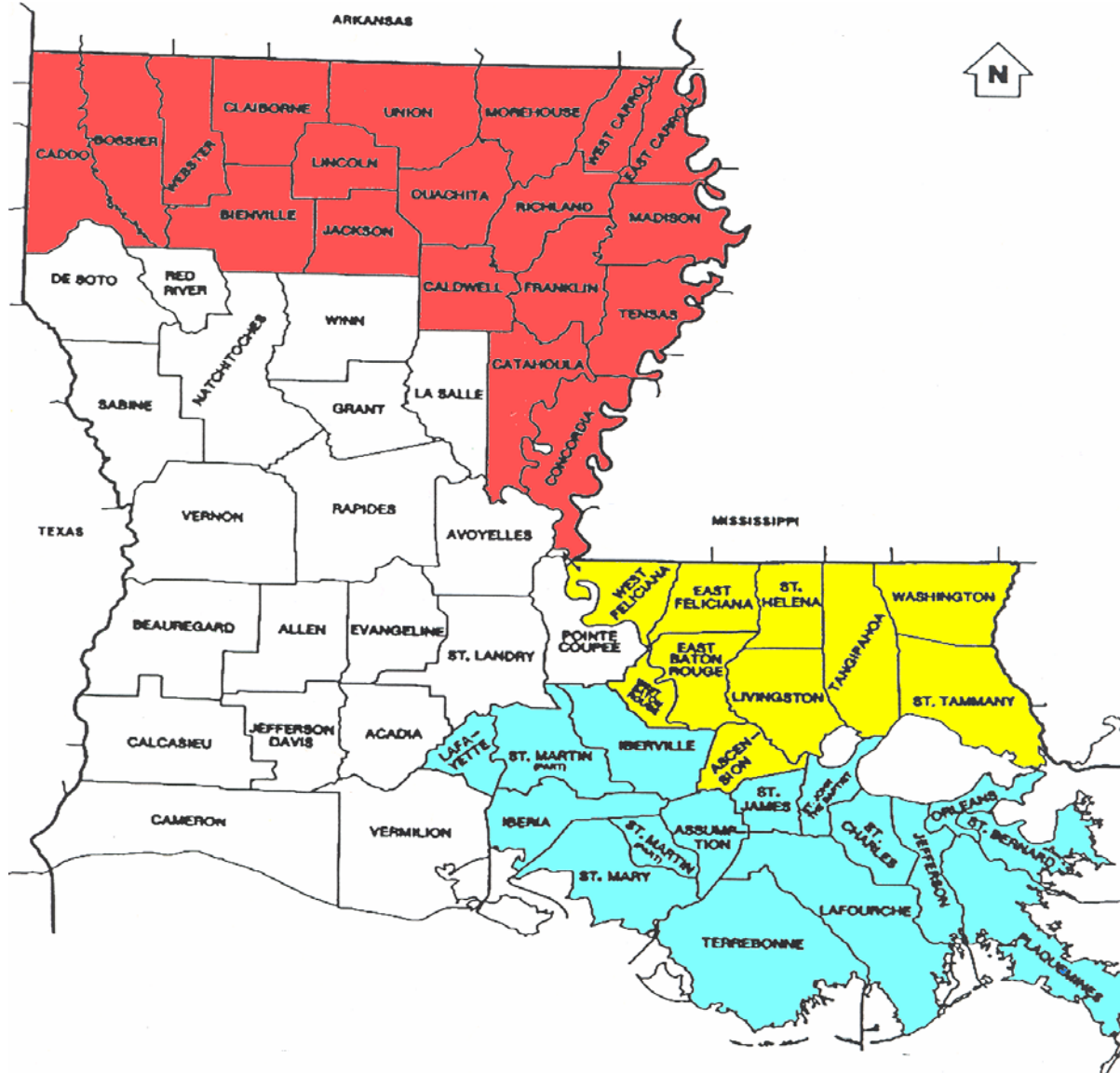


ELECTION DISTRICTS - ACT 80 of 2008

(effective January 1, 2009)



Membership

- District 1** (3340) (Assumption, Iberia, Iberville, Jefferson, Lafayette, Lafourche, Orleans, Plaquemines, St. Bernard, St. Charles, St. James, St. John, St. Martin, St. Mary, and Terrebonne)
- District 2** (3363) (Ascension, E. Baton Rouge, E. Feliciana, Livingston, St. Helena, St. Tammany, Tangipahoa, Washington, W. Baton Rouge, and W. Feliciana)
- District 3** (3438) (Bienville, Bossier, Caddo, Caldwell, Catahoula, Claiborne, Concordia, E. Carroll, Franklin, Jackson, Lincoln, Madison, Morehouse, Ouachita, Richland, Tensas, Union, Webster, and W. Carroll)
- District 4** (3357) (Acadia, Allen, Avoyelles, Beauregard, Calcasieu, Cameron, DeSoto, Evangeline, Grant, Jefferson Davis, LaSalle, Natchitoches, Pointe Coupee, Rapides, Red River, Sabine, St. Landry, Vermilion, Vernon, and Winn.)